

## Welcome to the Salt Lake Airport Marriott Fairfield Inn & Suites and the Perkins Café & Bakery Express.

Both wired and wireless internet access are available in every guest room, business center, meeting room and at the Perkins Café. Several plans are available, when using a wired high-speed internet port:

- Basic: Basic Service, Free.
- Gold: Faster Web Surfing and Downloading, \$6.95 per week.
- Gold+: Access w/Public IP Address (Required for some games, conferencing & VPNs). After selecting this service plan, you must restart your computer for the public IP to take affect. \$10.95 per week.

Internet connection charges will be billed to your room folio as "business connection charges". Network cables may be purchased at the front desk.

In most cases, no configuration changes are needed to access the Internet. Please use the enclosed guidelines to get connected. If you need additional help please contact the front desk or dial 746-7260.

### Printing

Printing from your guest room is available by using PrintMe service (55¢ per page, charged to your room). All documents will be printed at the front desk. Please see the included printing instructions or go to [www.printme.com/207936](http://www.printme.com/207936).



## Salt Lake City Airport

230 North Admiral Byrd Road  
Salt Lake City, UT 84116  
(801) 355-3331 Fax: (801) 355-3360  
[www.sla-ffi.com](http://www.sla-ffi.com) or [www.fairfieldinn.com/SLCFA](http://www.fairfieldinn.com/SLCFA)



E-Mail: [InfoConnect@sla-ffi.com](mailto:InfoConnect@sla-ffi.com)

## Browser Configuration

In most cases your browser is able to detect that a high-speed network is present. In a few situations it may be necessary to change your browser configuration. Please refer to the [section](#) for your browser.

### Internet Explorer

#### 1. Modify Internet Options

START | SETTINGS | CONTROL PANEL | INTERNET OPTIONS

2. Click on the **Connections** tab.

3. Select the first or second choice. **Never dial a connection.**

4. Click on **Lan Settings...**

5. Remove checkmarks from all settings

6. Click **OK.**

7. Click on **OK.**

If after completing this step, Internet Explorer still attempts to dial out, follow the instructions on **resetting the IP configuration.**

#### Using the *Internet Explorer Connection Wizard.*

At the first wizard screen select the following option.

- ✓ I want to set up my internet connection manually, or I want to connect through a local area network (LAN). Click on **Next >**

At the second wizard screen select...

- ✓ I connect through a local area network (LAN). Click on **Next >**

At the local area network configuration screen...

- Do not select any of the options** Click on **Next >**

when asked to set up your mail account select...

- ✓ No (do not set up mail account now.) Click on **Next >**



At the final wizard screen select...

- ✓ Connect to the internet immediately... Click on **Finish.**

If you are unable to connect, complete the **Reset IP Configuration step.**

### Netscape 4.7

1. From the EDIT menu, select PREFERENCES.
2. Under the ADVANCED category, select PROXIES.
3. Select DIRECT CONNECTION TO THE INTERNET.

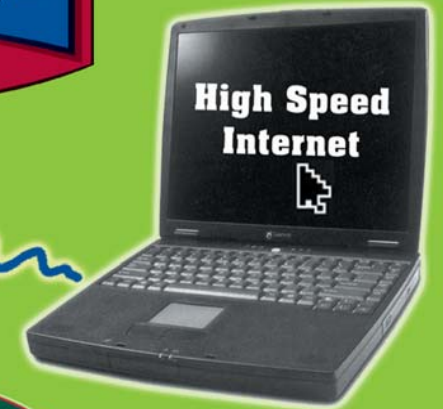
### America Online

1. From The CONNECT screen, select SETUP.
2. Select the last option for LAN, then click OK.

### Apple MacOS Classic (for Powerbook or iBook)

1. From the APPLE menu on the desktop, select CONTROL PANEL/TCP/IP.
2. Set to connect via ETHERNET. Configure USING DHCP SERVER.

# High-Speed Internet Connection Guide



## Wired Connection

### Step 1 Get Connected



You must have a network/Ethernet port on your computer. Using a network cable, connect your computer to the network connection labeled “High Speed Internet Network” located next to the work desk. If you have forgotten your network cable, you may purchase one at the front desk.

### Step 2 Start your computer

Once your computer boots up, your network “link” light on your network card or cable should light up, indicating you are connected to the network. If your link light fails, please recheck your connection.

### Step 3 Launch Browser

When you launch your browser (i.e. Internet Explorer, Netscape, AOL...) it should automatically recognize that you have a high-speed connection and automatically connect you to the [www.sla-fis.com](http://www.sla-fis.com) web page.

## Printing

Printing from your guest room is as easy as using the web or sending an e-mail, it is fast, secure and confidential. Your documents will be printed at the front desk once you enter your Doc ID on the PrintMe® keypad at the front desk.

It's as easy as using the Web...

1. Go to [www.printme.com/207936](http://www.printme.com/207936). Enter the requested information.
2. Click the “Browse” button to select and upload document(s) you wish to print. Click “PrintNow!”
3. You will receive a reference number (DocID). At the front Desk PrintMe station, enter the DocID and follow the on-screen instructions.

...Or sending an e-mail

1. Open the e-mail (with or without attachment) that you want to print.
2. Forward the e-mail to: [207936@printme.com](mailto:207936@printme.com)
3. You will receive an e-mail response with a reference number (DocID). At the Front Desk PrintMe station, enter the DocID and follow the on screen instructions.

## Wi-Fi Wireless Connection

### Step 1 Proper Equipment

Make sure you have the required equipment

- A laptop computer with a Wi-Fi 802.11b/g wireless adapter installed.
- Or Any Wi-Fi 802.11b/g compliant wireless device



### Step 2 Configure your wireless device

Set your wireless LAN setting SSID to **Fairfield**.

In most cases your PC or wireless device will come with a utility that shows the available wireless networks in the area. Choose the SSID of **Fairfield**. If you do not have a utility program that shows the available networks, you will have to configure your network adapter. In Windows, go to the **Control Panel** and select **Network Connections**.

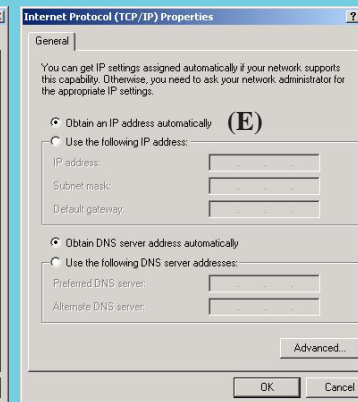
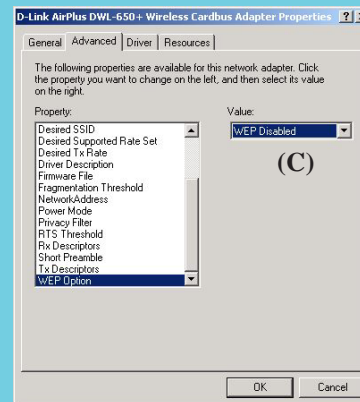
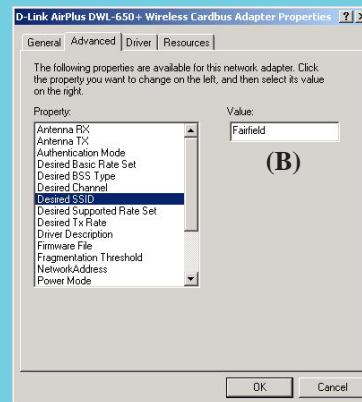
Select your wireless adapter (A)

Set the SSID to **Fairfield**. (B)

Turn Encryption **WEP Key** type to **Disabled**. (C)

DHCP for your wireless adapter should be on. (D)

Set the TCP/IP properties for your wireless adapter to **Obtain an IP address Automatically**. (E)



### Step 3 Launch Browser

For some PCs and devices you will need to reboot the device for the above settings to take effect.

Launch your browser and you should be greeted with the Salt Lake Airport Marriott Fairfield Inn and Suites home page.

## Reset IP Configuration

On some systems you must renew your IP configuration. This step is different depending on your computer's operating system. Please refer to the **Reset IP Configuration** section for your operating system.

### Windows NT, 2000, XP

#### 1. Run Command Prompt

START | RUN | Cmd | OK

#### 2. Type “IPConfig /release ↵” at the command prompt.

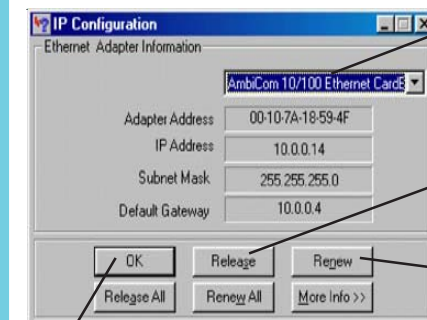
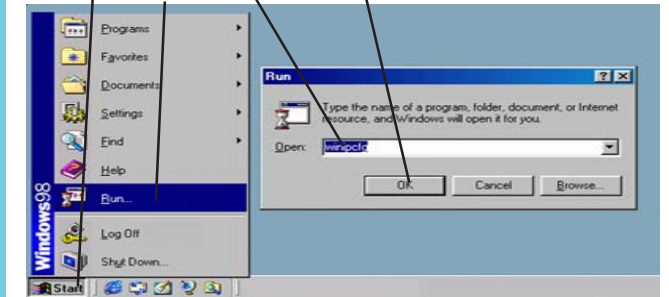
#### 3. Type “IPConfig /renew ↵” at the command prompt. You may need to wait a few seconds for a new IP address to be assigned.

#### 4. Type “IPConfig ↵” at the command prompt. The new IP address should be 10.0.0.???. In most cases once you have renewed your IP address, you should be able to connect to the internet. For some PCs you will need to reboot the device for the new settings to take effect.

### Windows 95 / 98

#### 1. Run WINIPCFG program

START | RUN | WINIPCFG | OK



#### 2. Select **network adapter** or NDIS Driver (not dial up or PPP)

RELEASE | RENEW | OK

#### 3. Click on **RELEASE**. The IP Address will change to 0.0.0.0.

#### 4. Click on **RENEW**. You may need to wait a few seconds for a new IP

address to be assigned. The new IP address should be 10.0.0.???. Click **RENEW** again once you have been assigned an IP address.

#### 5. Click on **OK**. In most cases, once you have renewed your IP address you should be able to connect to the internet. For some PCs you will need to reboot the device for the new settings to take effect.